

RODGERS & H

ALL



LET'S START AT THE VE-RY BE - GIN-NING A VE-RY GOOD PLACE TO



START WHEN YOU READ YOU BE-GIN WITH A - B - C WHEN YOU SING YOU BE-GIN WITH DO - RE - MI



DO - RE - MI THE FIRST THREE NOTES JUST HAP-PEN TO BE DO - RE - MI DO - RE - MI

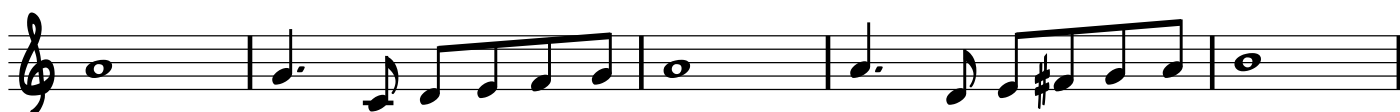
A



DO - RE - MI - FA - SO - LA - TI DOE, A DEER, A FE - MALE DEER



RAY, A DROP OF GOL-DEN SUN ME, A NAME I CALL MY-SELF FAR, A LONG, LONG WAY TO



RUN SEW, A NEE-DLE PUL-LING THREAD LA, A NOTE TO FOL-LOW SEW

Bb7

B Eb



TEA, A DRINK WITH JAM AND BREAD THAT WILL BRING US BACK TO DO OH OH OH OH, WHAT A

Ab

Eb

Fm7 Bb7 Eb



BEAU-TI-FUL MOR - NIN' OH, WHAT A BEAU-TI-FUL DAY. I'VE GOT A BEAU-TI-FUL

RIT. A TEMPO

Ab

A

Eb

Bb7

Eb

Bb7

Eb



FEE - LIN' EV'-RY-THING'S GO-IN' MY WAY OH WHAT A BEAU-TI-FUL DAY

Ab

Bb

Eb

Ab

Bb7

C ALL LADIES

Eb

Eb/G

Ab Gm/Bb



I'M JUST A GIRL WHO CAIN'T SAY NO I CAIN'T BE

Db/F Ab6/C 87

PRIS-SY AN' QUAINT Eb/Bb 8/A I AIN'T THE TYPE THAT CAN FAINT Eb/Bb RALL. Bb7 F/G G7 MEN
HOW CAN I BE WHAT I AIN'T? C I CAIN'T SAY G7

DON'T TAKE MY ARM TOO MUCH D7 DON'T KEEP YOUR HAND IN MINE Dm7
No C

YOUR HAND FEELS SO GRAND IN MINE G7 C
PEO - PLE WILL

SAY WE'RE IN LOVE! D Eb/F F7 F13 F7(b9) Bb ALL
ESUS E7 A7(b9) A7 D7 D Dm C°

'TILL THE STARS FADE FROM A - BOVE C/G C/E C/G Am7 D7

THEY'LL SEE IT'S AL - RIGHT WITH ME

RALL C/G Dm7/G G7 E C BRITE 2
LADIES DIV MEN DIV
PEO - PLE WILL SAY WE'RE IN OK-LA HO-MA OK-LA HO-MA OK-LA

PEO - PLE WILL SAY WE'RE IN LOVE F C Cm

HO-MA OK-LA HO-MA OK-LA MEN HO - MA OK-LA HO-MA OK-LA
WE KNOW WE BE-LONG TO THE LAND AND THE

G D7 G

HO - MA OK-LA HO-MA'S GRAND AND WHEN WE SAY _____ YEEOW! A - YIP-E-O-EE - AY! _____

LAND WE BE-LONG TO IS GRAND AND WHEN WE SAY _____ YEEOW! A - YIP-E-O-EE - AY! _____

WE'RE ON-LY SA-YIN' YOU'RE DO-IN' FINE OK-LA - HO - MA OK-LA - HO - MA _____

WE'RE ON-LY SA-YIN' YOU'RE DO-IN' FINE OK-LA - HO - MA OK-LA - HO - MA _____

G C Em C Bb/G C Em C

O. K. L. A. H. O. M. A. OK - LA - HO _____ MA! YEOW!

O. K. L. A. H. O. M. A. OK - LA HO _____ MA! YEOW!

BRITE 2 MEN F

WE GOT SUN-LIGHT ON THE SAND, WE GOT MOON-LIGHT ON THE SEA WE GOT

C7 F

MAN-GOES AND BA - NA - NAS YOU CAN PICK RIGHT OFF THE TREE WE GOT VOL - LEY - BALL AND

Gm7 G7(b5)/Db C C7 F

PING-PONG AND A LOT OF DAN-DY GAMES! WHAT AIN'T WE GOT? WE AIN'T GOT DAMES!

A7/E D+ G7(b5)/Db C13

WE GOT NOTHIN' TO PUT ON A CLEAN WHITE SUIT FOR WHAT WE NEED IS TUTE FOR

NO SUBSTI-

C7 ALL F FΔ Fb CSUS C7 F2 F Gm7

THERE IS NO-THIN' LIKE A DAME, _____ NO-THIN' IN THE WORLD, _____ THERE IS

C7 A7 D7(b9) Gm7 C13 F CSUS F/A C7

NO-THIN' YOU CAN NAME THAT IS A-NY-THIN' LIKE A DAME

F CSUS F/A C7 **G** F CSUS/G F/A C7

I'M GON-NA WASH THAT MAN RIGHT OU-TA MY HAIR, I'M GON-NA

LADIES

WASH THAT MAN RIGHT OU-TA MY HAIR, I'M GON-NA WASH THAT MAN RIGHT OU-TA MY HAIR, AND

SEND HIM ON HIS WAY I'M GON-NA WAVE THAT MAN RIGHT OU-TA MY ARMS, I'M GON-NA

WAVE THAT MAN RIGHT OU-TA MY ARMS, I'M GON-NA WAVE THAT MAN RIGHT OU-TA MY ARMS, AND

H ^{Bb} ALL

SEND HIM ON HIS WAY DON'T TRY TO PATCH IT UP TEAR IT UP, TEAR IT UP

F/C F7/C G7 C Ab

WASH HIM OUT, DRY HIM OUT PUSH HIM OUT, FLY HIM OUT, CAN-CEL HIM AND LET HIM GO! YEA,

Gb C7

LADIES

SIS-TER! I'M GON-NA WASH THAT MAN RIGHT OU-TA MY HAIR, I'M GON-NA WASH THAT MAN RIGHT

C7 RALL

OU-TA MY HAIR, I'M GON-NA WASH THAT MAN RIGHT OU-TA MY HAIR, AND SEND HIM ON HIS

MEN Dm7 G7 C2 C

WHO CAN EX-PLAIN IT WHO CAN TELL YOU WHY? FOOLS GIVE YOU RE-ASONS, WISE MEN NE-VER

ALL

TRY. SOME EN-CHAN-TED EVE - NING

WHEN YOU FIND YOUR TRUE LOVE. WHEN YOU FEEL HER CALL YOU A-CROSS A CROW-DED ROOM,

THEN FLY TO HER SIDE. AND MAKE HER YOUR OWN

OR ALL THROUGH YOUR LIFE YOU MAY DREAM ALL A - LONE.

SOPS & MEN

ONCE YOU HAVE FOUND HER. NE - VER LET HER GO.

ALTOS

AAH AAH AAH

J **C** **B**

ONCE YOU HAVE FOUND HER. NE - VER LET HER GO

AAH NE - VER LET HER GO

ALL LADIES

WE KISS IN A SHA - DOW. WE HIDE FROM THE MOON

OUR MEET - INGS ARE FEW AND O - VER TOO SOON

K C

SOP

WE KISS IN A SHA-DOW

ALTOS

I HAVE DREAMED THAT YOUR ARMS ARE LOVE - LY I HAVE DREAMED

G

L

WE HIDE FROM THE MOON

MEN & ALTOS

WHAT A JOY YOU'LL BE

SOPS

I HAVE DREAMED EV'-RY WORD YOU'LL

WE SPEAK IN A WHIS-PER A-FRAID TO BE HEARD

WHIS - PER WHEN YOU'RE CLOSE, CLOSE TO ME

M

ALL LADIES

A-LONE IN OUR SE - CRET, TO - GE-THER WE SIGH FOR

E/G#

D#7

G#m

ONE SMI - LING DAY TO BE FREE

ALL LADIES

HOW YOU'LL LOOK IN THE GLOW OF EVE - NING I HAVE DREAMED

MEN

TO KISS IN THE SUN-LIGHT

G

N C

ESUS E7

AND EN-JOYED THE VIEW IN THESE DREAMS I'VE LOVED YOU SO THAT BY

MEN

AND SAY TO THE SKY DREAMS I'VE LOVED YOU SO

Am **ALL LADIES** D(SUS4) D⁹ C/G F7 E7 Am

NOW I THINK I KNOW WHAT IT'S LIKE TO BE LOVED BY YOU

MEN

NOW I THINK I KNOW BE-HOLD AND BE-

D⁹ C/G B^o/G F/G G7(b9) C **MEN** C¹³ C+7

I WILL LOVE BE - ING LOVED BY YOU SHALL WE

LIEVE I WILL LOVE BE - ING LOVED BY YOU

0 POLKA
F

F⁶ C⁷

DANCE? ON A BRIGHT CLOUD OF MU-SIC SHALL WE FLY? SHALL WE

F **ALL**

DANCE? SHALL WE THEN SAY "GOOD-NIGHT AND MEAN "GOOD- BYE"? OR PER

F FΔ F⁶ F B^{b6}

CHANCE, WHEN THE LAST LIT - TLE STAR HAS LEFT THE SKY, SHALL WE

C⁷ F C⁷

STILL BE TO - GE-THER WITH OUR ARMS A-ROUND EACH O-THER AND SHALL YOU BE MY NEW RO-

Cm⁷ F⁷ B^b F/C D⁷

MANCE? ON THE CLEAR UN - DER - STAN - DING THAT THIS KIND OF THING CAN HAP-PEN SHALL WE

Gm⁷ C⁹ F Eb(SUS4) Eb⁷

DANCE? SHALL WE DANCE? SHALL WE DANCE!

P **ALL**

Ab Eb7 Ab Db Ab Fm Bbm7 Eb7 Ab Eb7

E - DEL - WEISS. E - DEL - WEISS EV - 'RY MOR NING YOU GREET ME SMALL AND WHITE.

Ab Db Ab Eb7 Db Ab Eb7 Ab

CLEAN AND BRIGHT YOU LOOK HAP - PY TO MEET ME BLOS - SOM OF SNOW MAY YOU BLOOM AND

Ab7 Db Bb7 Eb Eb7 Ab Ab7 Db Dbm Ab/Eb

GROW BLOOM AND GROW FOR - E - VER E - DEL - WEISS. E - DEL - WEISS BLESS MY

Eb7 Db/Ab Ab Bb7 **Q** Eb D/Eb

HOME - LAND FOR - E - VER THE HILLS ARE A - LIVE WITH THE SOUND OF MU - SIC

Eb Ab/C Abm/Cb F7(b5)

WITH SONGS THEY HAVE SUNG FOR A THOU - SAND YEARS MY

Eb/Bb AbΔ9 Fm7 Gm/Bb Bb7

HEART WILL BE BLESSED WITH THE SOUND OF MU - SIC AND I'LL SING ONCE

R Eb MAESTOSO G7

MORE

ALL C D7 G Gm7 C7 FΔ Fm7/D C/G

CLIMB EV' - RY MOUN - TAIN SEARCH HIGH AND LOW FOL - LOW EV' - RY BY - WAY

Dm7 G7 C C D7 G Gm7 C7

EV' - RY PATH YOU KNOW CLIMB EV' - RY MOUN - TAIN FORD EV' - RY

FΔ Fm7/D C/G Dm7 G7 C C7

STREAM FOL - LOW EV' - RY RAIN - BOW 'TILL YOU FIND YOUR DREAM **MEN** A

F F/E Dm⁷ G⁷ C C⁶/B Am⁷ D⁷

MEN
DREAM THAT WILL NEED ALL THE LOVE YOU CAN GIVE EV'-RY

SOP. ALTO
AAH

G D/F# Em⁷ A¹³ A⁷ D D⁷

MEN
DAY OF YOUR LIFE FOR AS LONG AS YOU LIVE

SOP. ALTO
AAH

G A⁷ D Dm⁷ G⁷ C^Δ Am Am/G F^b Dm⁷

SOP. DIV.
CLIMBS EV' - RY MOUN-TAIN FORD EV' - RY STREAM FOL - LOW EV' - RY RAIN-BOW

ALTOS
CLIMBS EV' - RY MOUN-TAIN FORD EV' - RY STREAM FOL - LOW EV' - RY RAIN-BOW

MEN
CLIMBS EV' - RY MOUN-TAIN FORD EV' - RY STREAM FOL - LOW EV' - RY RAIN-BOW

C/G C+7/E Dm/F G⁷

'TILL YOU FIND YOUR DREAM